

SEPTEMBER 2010

# SHEPHERD OF THE VALLEY NEWSLETTER

Volume 1, Issue 1

Shepherd's Office Hours;  
Mon-Thurs 9:00—2:00

Pastor Randy's Office  
Hours;

Tues-Fri 9:00 -12:00  
(by appt after 12:00)

Office phone;  
503.645.4994  
Sovlutheran.com

Fall worship begins  
September 12, 2010  
8:30 a & 11:00 a  
Sunday School for all ages  
9:45 a

## Inside this issue:

Pastor's Page	2
President's Report	3
Presidents Report	4
Scrip Order, prayer Shawl, Ladies Dinner	
Social Concerns Red Cross	5
Health Team	6
Thrivent	7
Treasurer's Report	8
Kids of the Kingdom	9
Stewardship	10
Birthdays Anniversaries	11
SOV Picnic	12
CPR/AED	13
Calendar	14

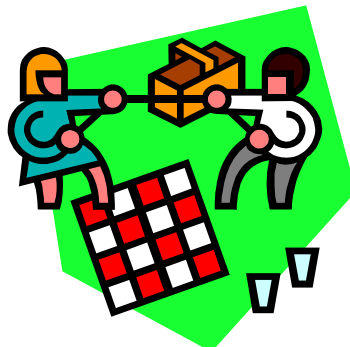
# RALLY DAY

Dear Parents, Grandparents, and Neighbors with kids,

Please plan to stop by the Rainbow Room on Rally Day, September 12, between Services to register your child (ren) for Sunday School this year. We will have refreshments, children activity(ies) and more. This is an informal meeting to get ready for the first day of class, September 19. Our teachers will be present to assist you.

Remember the annual SOV Rally Day picnic is after second service that day. See you at the Rally Day Celebration for Back to School.

Parish Ed Committee





## PASTOR'S PAGE

***"....remembering the words of the Lord Jesus, for he himself said, 'It is more blessed to give than to receive.' " Acts 20:35***

It really is true in many ways. It is difficult for me to buy family presents too early because the eagerness to give them is almost too much to take. That must be a part of what Jesus is talking about in saying that "giving is a blessed thing". That is part of what it is to live a generous life.

We will touch again and again on that theme for our life as a community of faith in this next year. That theme will be "Living a Generous Life". One of the reasons that many of us are able to live generous lives is, not only because we have been greatly blessed, but because it feels so grand to be a blessing to others. "Living a generous life" is done in all sorts of ways of course. Sure our material gifts are a part of it, there is also what may seem like the usual litany for many. There is teaching, singing, cleaning, greeting, all sorts of 'ings. They all can be a part of making life even more richly blessed. Opening ourselves up to what we know we can do, what we think we can do and what we have no idea that we can do. It is about opening up the whole of our lives.

It brings to mind these words of Frederick Buechner, part of his definition for the word pride, "Self-love or pride is a sin when, instead of leading you to share with others the self you love, it leads you to keep your self in perpetual safe-deposit. You not only don't accrue any interest that way but become less and less interesting every day."

So, living a generous life can be good for all concerned. For the giver and the receiver. That is a pretty sweet deal. It is not drudgery but an exciting adventure. Certainly fraught with trials and difficulties, but joy and possibility as well.

Just ten days ago I was able to hold the new life of my grand-daughter Daphne in my hands. She was barely an hour old. I held her with trembling hands, because of the awe I felt, and also because she was so tiny and fragile. As I held her I prayed and promised silently that I would do all I could for her, and long as I could. Knowing full well that I cannot give her all the protection and riches that I would like to. But what I can give I will give generously because it just seems so easy and natural. This child of my child, what else would I promise? And my life will be enriched by this giving.

Indeed, "it is more blessed to give than to receive." To live a generous life opens us up to even more of the gifts that surround us. The idea is not a new one, but one that is good to be reminded of, especially when we become consumed by challenges, frustrations or disappointments. It is good to see again the reasons for joy, the reasons to share, to take to heart anew some words of G.K. Chesterton, "Gratitude is the true test of happiness."

May we live generously, be a blessing, and know blessings, all the more. The joy of living a generous life.

In Christ,  
Pastor Randy

# COUNCIL PRESIDENT'S REPORT

Submitted by Peggy Jo Vermaas

Greetings and God's peace to all,

September is here and Fall is in the air. The sun shines with a little more yellow glow and the leaves are showing bits of red. My favorite time of year. Lot's of 'getting ready' and 'coming together' going on . . in life and here at Shepherd. I hope all have had a restful summer and are ready to begin another great church year.

In the midst of the planning for the church year, this is also the time when I like to look back . . . read old letters, emails, newsletters . . . read minutes and committee reports from years past . . . look at pictures. I consider the past important. Lessons to learn. Present issues or problems sometimes cloud our vision. From this look back I can clearly see how Shepherd continues to grow in so many ways. Building on Christ, our foundation. More mission work. Great teaching of the word. Great music. A beautiful setting. Getting together. Working together. Caring for our members and our building. Celebrating the present and planning for our future. Building.



My thoughts also run to our beloved member, Ann Smith, who often spoke of her pride in her congregation and her love for us all. She liked us 'together' more. Loving actions. Supportive words. Things to remember.

Please keep praying for the missions of Shepherd . . . that we are hearing God's message to us both as individual's and as a congregation and putting his words into action . . 'Touching others for Christ'. . . touching one another in Christ as well.

Check the Council minutes. Otherwise, here are a few highlights:

**OUR PICNIC!!!** Our annual picnic is one of the few times we all get together as a family. I hope you will plan to attend and enjoy this fellowship opportunity.

**VBS QUILT RAFFLE!!!** I hope you will all appreciate the beautiful quilt that is now on display. The quilt top was created by our Vacation Bible School kids and made into a quilt by Clara Mashek. We are selling raffle ticket's for \$1 each with the drawing to occur at our Rally Day celebration. All proceeds are going to our Youth/Parish Ed programs! A big thank you to Clara for bringing her servant's heart to this project! What a great way to support our kids!!!

**Budget:** Thanks to Betty {and Mark} for their continued efforts to keep us all informed on budget issues. Please note that we continue to be challenged in meeting our expenses. Your Council made a decision that we would not use committed funds (those allocated for a specific purpose i.e. memorials, building, youth) to cover budget shortfalls. Your Council members believed that this reflected the wishes of the congregation and not just our own views. However, our offerings have been low during these summer months. At this time we are asking that each person prayerfully support the general budget. Our goal will continue to be the same . . . meet all expenses on a very limited budget and create a small financial cushion to allow for some seasonal fluctuations in expenses. Please help to achieve this goal.

## PRESIDENTS REPORT CONTINUED...

**EASEMENT:** Our attorney, Jack Orchard, continues negotiations. Reynold Roeder and Dave Rasmussen are working together with Jack . . . watching the details and advocating for the best interests of Shepherd. We are blessed by their servant's hearts. Keep all in our prayers for perseverance and a successful outcome. Patient but prepared.

**KOK:** Under the continued leadership of our KOK Board members, SOV's Kids of the Kingdom Christian Pre-school is scheduled to open September 13th. Many have been busy working on this mission (particularly Wendy Roeder and Linda Rasmussen - KOK directors) and will continue to do so as the program develops. Soon there will be an opportunity for the congregation to meet the new teachers - who reported to be very much welcomed when they attended the rummage sale.

**Coming:** Expanding our vision of Stewardship; Memorial and Endowment Opportunity; Taking care of our building; Capital Campaign update.

Thank you from your Executive Team for your continued support and encouragement.  
Yours in Christ, Peggy

### LADIES DINNER

*Tuesday... September 14, 2010 ... 6:30 pm*

*Nonna Emilia Ristorante Italiano*

*17210 SW Shaw St, Aloha*

*Please RSVP to Clara M.*



### **PRAWL SHAWL MINISTRY...**

*Open to men, women  
and youth~*

Will meet September 20th at  
7:00 pm at SOV

*No experience required...*

### **Next Scrip Order ...**

September 12th.

Thank you for your  
continued support in this  
fundraising event.

To date SOV has raised \$827.69  
on this program.



**OCTOBER NEWSLETTER DEADLINE SEPTEMBER 21, 2010**

## SOCIAL CONCERNS... BY LARINA HOFFBECK

SOV has been blessed with the opportunity to be part of the Body of Christ in the local community this Summer and Fall!

### Backpacks, 2010:

Thanks to everyone who donated school supplies and to the five volunteers from SOV who helped with LoveInc.'s "Packed With Love" event on August 21, 2010! We were blessed to be able to join many other Christian churches in the Beaverton area in passing out backpacks and school supplies to over 700 middle and high school students.



### Beaverton Compassion Clinic, Saturday, October 9, 2010

Please join SOV's Social Concerns committee and SOV's health team in supporting the 2010 Beaverton Compassion Clinic. This event provides basic health care and social networking for local residents lacking health insurance. There are many ways to volunteer for this event at their website: <http://www.compassionbeaverton.org/>. You can also go to SOV's site and click on the Compassion Beaverton link on Social Concerns' page. We hope to see you there!

Both of these events are possible due to many local Christian churches acting together to share God's love with all His children. We hope that you will make every effort to get involved with the Beaverton Compassion Clinic so that you can experience the blessing of serving others outside our own church walls first-hand.

*Shepherd of the Valley* is proudly sponsoring a second American Red Cross blood drive Thursday, September 2nd 2 – 7 pm.



**American  
Red Cross**

*We encourage all eligible persons to help our local community by giving the gift of life. The blood donation process takes about an hour of your time and could save up to 3 lives. First time donors are welcome! For more information and/or to schedule your appointment to donate blood please call 800-787-9691 or 503-284-4040.*

## Parish Nurse & Health Team Ministries

### *Parish Nurse*

Some might ask; What is a Parish Nurse program all about?

Parish Nursing is nursing that is guided by the Holy Spirit; as the patient (parishioner or member of the community), the Pastor and the Parish Nurse journey together with God caring for the congregation and wider community.

It is through the actions of modeling compassion and God's unconditional love that the community may come to realize the Church is a "safe place".

Parish nursing fits the model of wellness and prevention in a way that touches lives across generational, cultural and socioeconomic lines.

Parish nursing is a ministry of the congregation, not of the individual performing the ministry.

Shepherd of the Valley Lutheran Church (SOV) is very blessed to have **Corrine Gilbertson** as our Parish Nurse.

### *SOV Health Ministry Team*

Others may ask; What is a Health Ministry or Health Team?

A Health Team is comprised of a small group of caring individuals, usually drawing from health care professionals and other individuals who interested in exploring and enhancing the issues of faith and health within the congregational setting.

A primary task of the health team is to assist the parish nurse in strategically planning and leading the congregation's health and wellness outreach.

### **"Body, Mind & Spirit"**

The Health Team is currently comprised of ten members of SOV.

In the near future each member of SOV will be hearing from a member of this team to strategize our continued commitment to the wellness of our congregation and the community at large.

As you may have heard, through a private gift, SOV now has an AED machine which is located on the wall outside of Pastor Randy's office. The AED Plan will shortly be distributed to all members of SOV.

In an effort to update the desires and health information on each member of our congregation (to be used only in the event of medical emergency) a member of the Health Team will be asking that you complete a 'Survey Health form' which will be kept in a locked file cabinet at the Church. This information will remain personal

## HEALTH TEAM MINISTRY CONTD.

confidential unless needed in a medical emergency.

Each member of the Health Team ministry will sign a personal and confidential agreement to insure each person's responses are kept confidential.

We are all whole persons made up of interrelating parts that are constantly affecting each other.

**The Physical (body)**

**The Mental (thoughts)**

**Emotional (feelings)**

**Spiritual (spirit)**

Members of the Health Team will be installed Sunday August 29<sup>th</sup> at both services.

Peace, Happiness & Love,

Health Ministry Team

## THRIVENT FINANCIAL FOR LUTHERANS...

### Economic and Investment Outlook Update

Economic and Investment Outlook Update is a free educational event that can help you make more informed investment decisions.

During the event, you'll gain a better understanding of the factors that affect financial markets and trends. You'll also receive an overview of how the changing economy can impact investment markets, how emotions can affect your decisions, and when to get professional financial guidance.

The free one-hour event will be presented by Thrivent Financial for Lutherans representative, Jason Drews, Financial Consultant, on October 26, 6:00-7:00 pm location Hillsboro-TBD and October 27, 12:00-1:00 pm at the Lake Oswego office. For more information, contact Susan at 503-635-2003 ext 245 or [susan.rothe@thrivent.com](mailto:susan.rothe@thrivent.com).

The Economic and Investment Outlook Update event is intended only to educate you about financial decisions. It is broad in scope and does not consider your individual personal financial situation, which is unique. The information and advice may not be appropriate in all cases. No products will be offered for sale.

For additional important disclosure information, please visit <https://www.thrivent.com/disclosures/>



# TREASURERS REPORT...Submitted by Betty Stoltenburg

## July Summary:

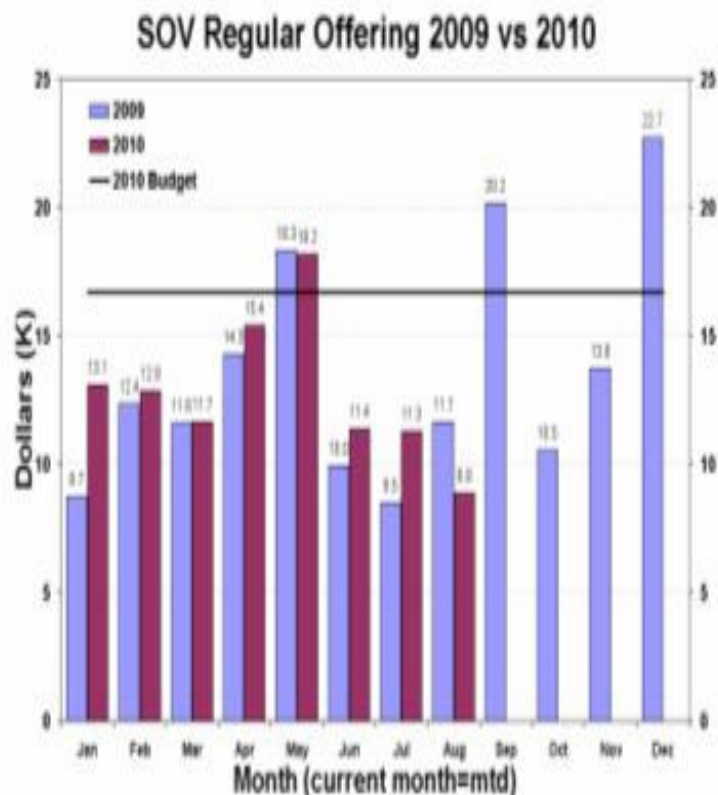
- Regular Income 11.3K (5.4K short of budget)
- General Income
  - KOK cost share reduced from 1.2K to 400
  - Garage Sale Income was 3,043.8 (made up a good portion of the budget deficit for July)
  - Script Income was \$150

## August:

- Need to Prioritize what gets paid based on income
- Reminder: Insurance (\$778) and ADT Security (\$402) due by end of month 90%

## 2010 Outlook

- Giving has increased 12% from 2009 (Jan-Jul)
  - Budget increased 20%
- Year End Trend appears to be 10% short of budgeted needs with the following assumptions
  - Giving trend is consistent with 2009
  - Continue to see 12% increase from 2009
- Bottom Line: Need to generate ~\$19K/month (\$200,581 - \$102,832-\$12,000)/4.5 months remaining) of income between now and the end of the year to break even.





## KIDS OF THE KINGDOM - CHRISTIAN PRESCHOOL

The new paint is dry, the workroom is in order, the bulletin boards are up, the new supplies have come in, the staff is on board, the curriculum is ready, and anticipation and excitement are in the air. Kids of the Kingdom Christian Preschool officially begins the 2010-11 school year with a family orientation day on Monday, September 13th with classes beginning Wednesday the 15th. We have a combined 3- and 4-year old enrollment of 11 children meeting three days a week from September through May.

Our Christ-centered program offers monthly themes helping children find their place in God's creation. Our experienced and loving teachers, Deb Halligan and Veronica Murray are eagerly awaiting the arrival of our children and families and are ready to be examples of Christ's love in action. Deb has already planned home visits with families of three year olds and children who are new to preschool. This lessens the anxiety of children and families and helps them feel "at home" when they walk through the door into the preschool environment. We are truly blessed to have found such gifted and proactive teachers as Deb and Veronica.

We want our program to grow, grow, grow! If you have children, grandchildren, or neighbors in need of a quality Christian preschool program, please get the word out that we are open. We would love to give tours of our facility. Please contact either Wendy or Linda for a time and day. Brochures and application forms are available, in the narthex, the church office and in the preschool office. Our website may be accessed at [www.sovlutheran.com](http://www.sovlutheran.com). Questions may be directed to Wendy or Linda at any time, just give us a call. Our teachers will be formally presented to the congregation at both services on Sunday, September 26th and will be available for conversation between services that day.



Kids of the Kingdom is first and foremost a ministry of Shepherd of the Valley. As such, we want to touch as many children and families for Christ as we can. It has been brought to our attention that there are many disadvantaged families in the area that have children in need of a preschool program, but cannot afford to send them. Therefore, we would like to establish a scholarship program for those students who need assistance the most. Yearly preschool tuition is \$1500 for a 3-day a week program and \$1100 for a 2-day a week program. Donations of any amount for tuition assistance would be a blessing to our program. Please prayerfully consider touching the future and sharing Christ's love with a child and family by making a donation today. Make checks payable to Kids of the Kingdom Christian Preschool and put in the Church Sunday offering plate or mail to the Church to the attention of the Preschool. Please note on the check that it is for tuition assistance. We are a 501(c)3 tax exempt organization as a ministry of Shepherd. You will receive a year-end donation letter for your records.

If you have any questions, please contact Wendy or Linda at 503-645-0236. As always, please remember the staff, children and families of our program in your prayers.

## BEING STEWARDS... Submitted by Diane Lewis

The Stewardship committee is working on a year-long Stewardship program for our congregation. We will be putting together a variety of opportunities for celebrating how we can give to God as we explore putting into actions the power of living a generous life within our church as well as in all other areas of our lives.

Your Stewardship committee will be working with our membership this year to help us each grow in our understanding and knowledge so that we can strengthen our abilities to be good stewards of what God has given us.

On September 12, we will gather together in worship, start a new program year within our committee structure, install our Sunday School teachers, share in lots of special music, and come together to share in the food, fellowship and fun at our annual picnic.

September 19, is Volunteer Sunday. We will focus on how we can lead a generous life through volunteering. Race for the Cure will be celebrated during Sunday School. Plans are in process to include all ages in celebrating the Race for the Cure. We want to create a collage of all the different areas of volunteering that our members support. Everyone will be invited to write on cards or balloons to create a vision of volunteering. Sharing God's love through service is an area that all ages participate in to make a difference in the lives of others.

September 26 will be celebrating our Storehouse. The congregation will be encouraged to help with a food drive to support the spirit of generous living by collecting food and bringing these gifts to the altar during worship.

We have a budget that needs prayers and support. How can we each make a difference in supporting the financial responsibilities of Shepherd of the Valley? Let's work to participate in what we have committed to support as a faith family of SOV in our mission and ministries. We can achieve this support through our financial giving and involvement.

Our church has goals to build. Until that can become a reality we can build our mission and ministries through building our programs, reaching out to our community and strengthening our commitment to our God who has called us to be faithful stewards of what He has given us. Let's teach our children the joys of volunteering. Let's work with them to learn what it means to go outside our church and help others. Let's get involved with other churches to make a bigger difference in our community. We will grow in our own faith and receive more than we can give.

Through the Spirit of living a generous life we can feel the power of God's love as we create new opportunities put into action being "A caring community, touched by Christ, touching others for Christ".

Look for more from our Stewardship team as we look towards a new year and help us build excitement with the real joy of giving to God within our congregation and through outreach in our community.

## Shepherd of the Valley Annual picnic and christening our new deck!

Submitted by Diane Lewis

September 12, 2010 Noon to ?

Time for food, fellowship, fun with activities for everyone.

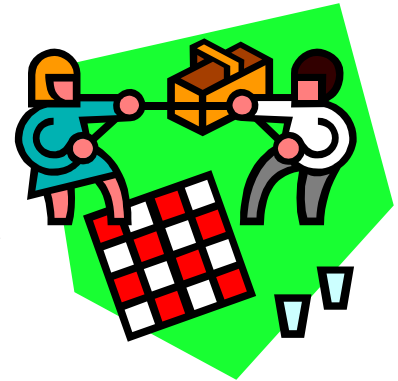
The congregation is invited to join in the fun of our annual picnic as we celebrate the start a new program year, have time to gather for fellowship, share a meal, connect with members of all ages and really christen the new deck.

Hot dogs, fried chicken and corn on the cob will be donated. Each family is asked to bring a side dish or simple dessert to add to our menu.

All ideas to make this a great intergenerational fun event are welcome. We encourage you to bring a change of clothes if you want to participate in any of the field games and a towel for possible water games.

We need volunteers to sign up for set up, cooking corn and hot dogs, helping with games and clean up. Our children can be part of the planning. Ask them what they might like to do to help or what they would like to have for games.

A signup sheet will be available at church as well as over email. Please contact Diane Lewis by phone or email.  
Phone: 503 648 5939 email: delewis911@aol.com



This can be a fun opportunity to introduce your family and friends to ministry and members of our SOV family. Mark your calendars for September 12! It is going to be a fun filled day with Rally Day, the start of our program year and end with our annual picnic!

## WELCOME DAPHNE KENNEDY KELLEY...

*Congratulations to Amie and Chris Kelley, Chase, Taylor and Avery, Pastor Randy and Choice on the birth Daphne Kennedy Kelley born August 13, 2010. Weighing in at 6 pounds 8 ounces and 20 1/12 inches long.*

*God's Blessing on this wonderful new addition to your family~*



## CPR/AED TRAINING



Mark your calendars...

September 25, 2010

9:00 - 2:15

At SOV

CPR/AED - Adult Training by American Red Cross

More information to follow.

## FALL WORSHIP SCHEDULE...

- September 5, 2010 ONE SERVICE AT 10:30 a
- Wednesday Vesper Service begins September 8, 2010  
(New Unfailing Light liturgy)
- Fall Worship Schedule begins September 12, 2010

Worship services with communion at 8:30 a & 11:00 a

Sunday School for all ages at 9:45 a

## CHOIR RESUMES



ADULT CHOIR BEGINS;

WEDNESDAY SEPTEMBER 8TH @ 7:00 P

YOUTH CHOIR BEGINS;


TUESDAY SEPTEMBER 14TH @ 6:30 P



**OCTOBER NEWSLETTER DEADLINE**  
**SEPTEMBER 21, 2010**



# September 2010

Sunday	Monday	Tuesday	Wednesday	Thursday	Friday	Saturday
			1 10:00 Bible Study 11:15 a Rebecca Circle Brown bag lunch	2 2-7 p American Red Cross Blood Drive 6:30 p Men's Night	3	4
5 ONE WORSHIP SERVICE 10:30 A	6 <b>LABOR DAY OFFICE CLOSED</b>	7  7:15 a Coffee Group @ Starbucks 7:00 Parish Ed Meeting	8 10:00 Bible Study 6:30 p Vesper Service's Begin 7:00 p Adult Choir Begins	9	10	11 
12 Worship services 8:30 & 11:00 <b>Rally Sunday</b> Birthday Sunday Blood Pressure Scrip Orders due	13 7:00 p Social Concerns Meeting	14 7:15 a Coffee Group @ Starbucks 6:30 p Ladies Dinner @ Nonna Emalias 6:30 p Executive Council 6:30 p Youth Choir Begins	15 10:00 Bible Study 6:30 p Vesper Service 7:00 p Adult Choir	16 10:00 a LLL 7:00 p Council Meeting	17	18  Youth Choir outing to Enchanted Forest
19 Worship services 8:30 & 11:00 w/communion Sunday School 9:45 a	20 7:00 p Prayer Shawl Ministry 	21 7:15 a Coffee Group @ Starbucks 6:30 p Youth Choir	22 10:00 Bible Study 6:30 p Vesper Service 7:00 p Adult Choir	23	24	25 American Red Cross CPR/AED training 9:00-2:15 
26 Worship services 8:30 & 11:00 w/communion Sunday School 9:45 a	27	28 7:15 a Coffee Group @ Starbucks 6:30 P Youth Choir	29 10:00 Bible Study 6:30 p Vesper Service 7:00 p Adult Choir	30 12:00 p All Church Luncheon 		

